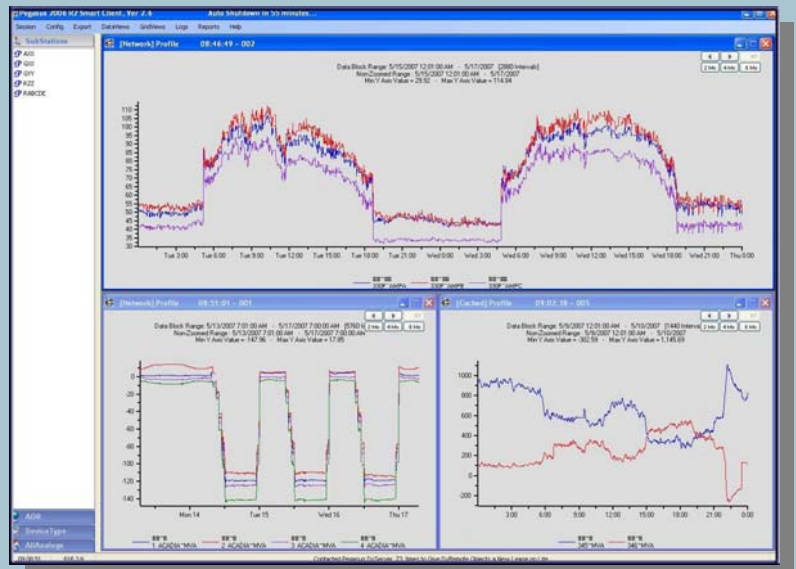




# NOBADEER SOFTWARE ENGINEERING, INC.

Pegasus RDS™  
“Simplify Your Data”



## Historical Data for Energy Management Systems: Generation Next

Until Nobadeer Software's *Pegasus RDS™* no vendor has provided a real solution for historical data captured from Energy Management Systems (EMS). EMS vendors have never spent the time and R&D money to produce solid solutions; third party add-on solutions are not integrated with the EMS. Typical utility complaints include:

- Requirement to manually map points into a historian
- Requirement to separately map points, quality codes and limits, and then tie them together again in the historian
- Lack of long term history for data points due to object name changes
- Requirement to select the points of interest before the fact, instead of having all data available
- Requirement to pull data off tape to satisfy engineering data requests
- Requiring multiple "sampling" programs running on the production EMS
- Requirement to keep track of database changes by hand
- Requirement to increase staff to maintain historical data
- Events are not captured by the same historical system

### *Pegasus RDS™*

These problems have been addressed in the next generation software platform from Nobadeer Software. This field proven software platform, *Pegasus RDS™* - Pegasus Real-Time Data Store, consists of three integrated products, and is now available.

*Pegasus RDS™* -Real-time Data Store features:

- Automatic mapping of EMS data by *Pegasus RDS™* resulting in auditable reports showing database changes over time
- Tight Integration of quality codes and limits with every data point
- Long term history of points preserved across database name changes
- All data captured all the time
- 5 to 10 years of on-line storage
- Data viewing client allows maintenance and planning departments to access data without assistance from the EMS support staff
- Extraordinary on-line performance on historical data call-up – data from 5 years ago is just as fast as today's data – call up times typically under 1 second
- Events are captured and enjoy the same performance advantages as numerics
- All data and events can be quickly retrieved into Access or Excel

Mock Key	Action	Substation	DeviceType	Device	Meas	MeasVal	Lim
1.14.648.430	M	-----	-----	29F	CBD	BKRD	
1.14.648.440	M	-----	-----	29F	CBD	STTS	
1.14.648.470	M	-----	-----	27F	CBD	BKRD	
1.14.648.480	M	-----	-----	27F	CBD	STTS	
1.14.716.210	E	-----	-----	103A	CB	BKR	
1.14.739.1660	D	-----	-----	T4	GENL	DFL	
1.14.739.1660	D	-----	-----	T4	GENL	SPDC	
1.14.739.1670	D	-----	-----	T4	GENL	BDLK	
1.14.739.1780	M	-----	-----	T4_SEL387	GENL	RLYT	
1.14.739.4220	A	-----	-----	T4	GENL	DFSW	
1.14.739.4230	A	-----	-----	T4_86TD	GENL	DFL	
1.14.739.4240	A	-----	-----	T4_86TSP	GENL	SPDC	
1.14.739.4250	A	-----	-----	T4_86LS	GENL	DVJK	

## Pegasus RDS™ Platform Products

**MetaDataRT™** – Stores the history of every database change made in the system, and produces reports showing differences between any two databases. Associates data with “invariant keys”, allowing historical data to be stored and retrieved for a particular SCADA object regardless of database name changes or physical equipment movement.

**EventsRT™** – Stores and manages system wide event and alarm messages, and provides quick filtering capability and fast lookup.

**NumericsRT™** – Stores all numeric and status data for fast on-line access to 5 or 10 years worth of data.

There are two additional real-time platforms from Nobadeer Software which add value to the Real-time Data Store.

**Pegasus RDM™** - Pegasus Real-time Data Mining. This platform allows users to add business logic to view data from the data store and execute web-based reports such as: *uncommanded device trips, feeder overloads, and transformer overloads*

**Pegasus RPM™** - Pegasus Real-time Predictive Mathematics. This platform provides another way to predict peak loads or other variables based on techniques used in financial markets.

Nobadeer Software’s **Pegasus** platforms serve as a Next Generation EMS historian with fully integrated data retrieval, in addition to “Near Real-time Data Mining”. With database change management audit trails and the ability to add business decision logic to the integrated data store, **Pegasus** is an indispensable management support tool. Built to utility specifications, **Pegasus** is field proven. It is installed and running at a major multi-site utility in the United States, with over a **trillion** records in the **Pegasus RDS**.

Name	Extends	Total
3,395	0	13,400
7,473	0	7,478
324	0	324
5,230	2	45,339
3,396	0	13,396
7,474	0	7,474
324	0	324
5,327	0	45,348
3,384	7	13,396
7,419	52	7,474
321	0	327
5,312	11	45,344
3,388	3	13,400

Area	Category	DeviceLongName	NominalKV	HighLimit	LowLimit	NormalStatus
OICBM	DB	29F	4			NCL
OICBM	DB	29F	4			NAB
OICBM	DB	27F	4			NCL
OICBM	DB	27F	4			NAB
OICLC	DB	103A	13			NCL
OICLPXAA	XF	T4	138			NOP
OICLPXAA	XF	T4	138			NOP
OICLPXNA	XF	T4	138			NOP
OICLPXNA	MH	T4_SEL387	138			NOP
OICLPXNA	HC	T4	138			NCL
OICLPXAA	HC	T4_86TD	138			NOP
OICLPXAA	XF	T4_86TSP	138			NOP
OICLPXAA	MH	T4_86LS	138			NOP

MeasVal	Limit	Area	Category	DeviceLongName	NominalKV	HighLimit
BKRD		NULL	NULL			
BKRD		OICBM	DB	27F		
BKRD		OICBM	DB	27F	4	
BKRD		OICBM	DB	27F		
BKRD		OICBM	DB	27F		
BKRD		OICBM	DB	27F		
BKRD		OICBM	DB	27F		
~	~	~	~	~		
~	~	~	~	~		
~	~	~	~	~		
~	~	~	~	~		

